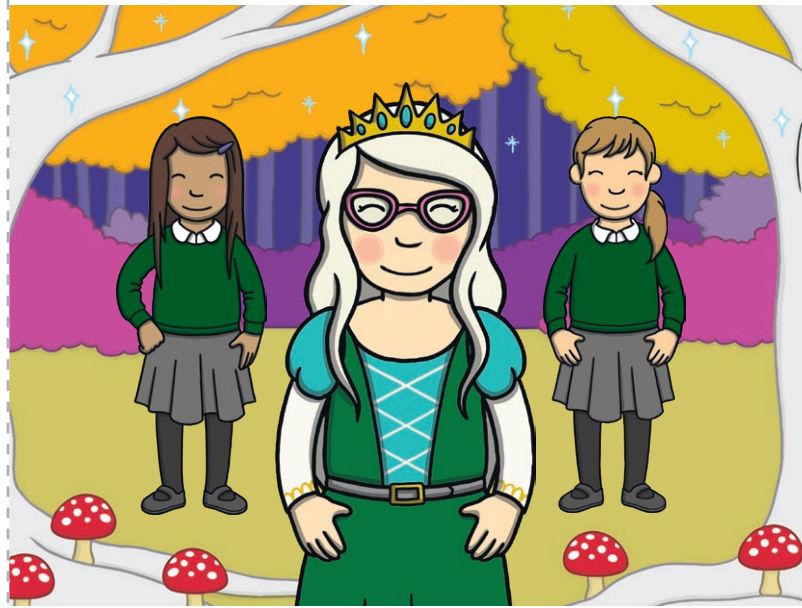


## Lily's Challenge

Sam makes a new friend when Lily joins the class but is there more to Lily than meets the eye?

# Lily's Challenge



## A 'Let's Read Together!' Book

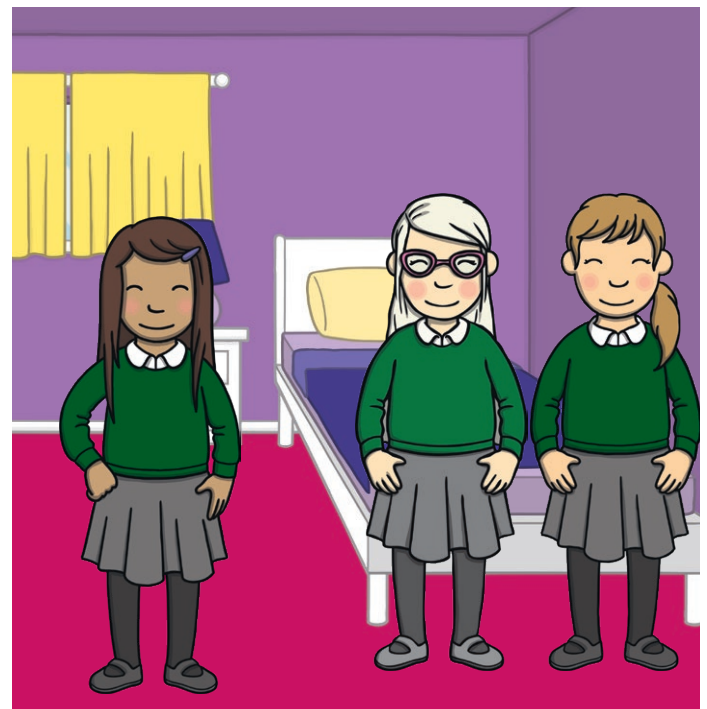


Q5: What did the troll want in exchange for Prince Ash and his badge?

---

Q6: Where did they find the flower?

---



We sat on the edge of Sam's bed and she let me and Gabi see the magic book. The book took us to visit Shine and Grime's Enchanted Forest!



I started a new school this week. It was a big change for me but everyone was very kind.



Q7: How do you think Lily, Gabi and Sam felt after their adventure?

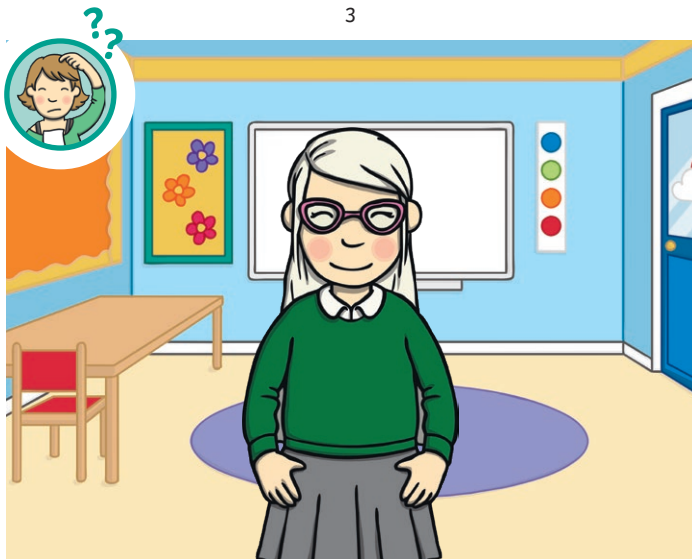
---



---



---



Q1: How did you feel on your first day of school?

---

Q2: Where did the magic book take them?

---



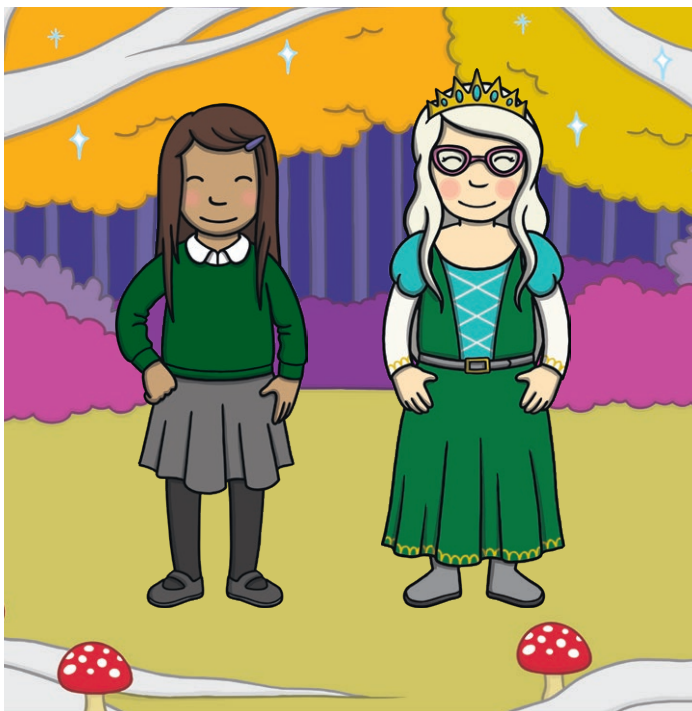
We found the orange flower by the edge of the forest and we gave it to the troll. Prince Ash was very happy to be free. We saved the day!



We got to the troll's bridge and there was a note. The troll told us to find a large, orange flower and he would exchange it for Prince Ash and his badge. Then, Grime came out of the bush and told us that he could help.



We met an elf – his name was Sarge. He made me into a princess and said that only I could help. He told me to rescue Prince Ash and his golden badge. I was up for the challenge!



Prince Ash had been taken by a troll who lived under a bridge. Sam and I had to work together to solve the clues he had left in the forest. My job was to read the braille on the toadstools.

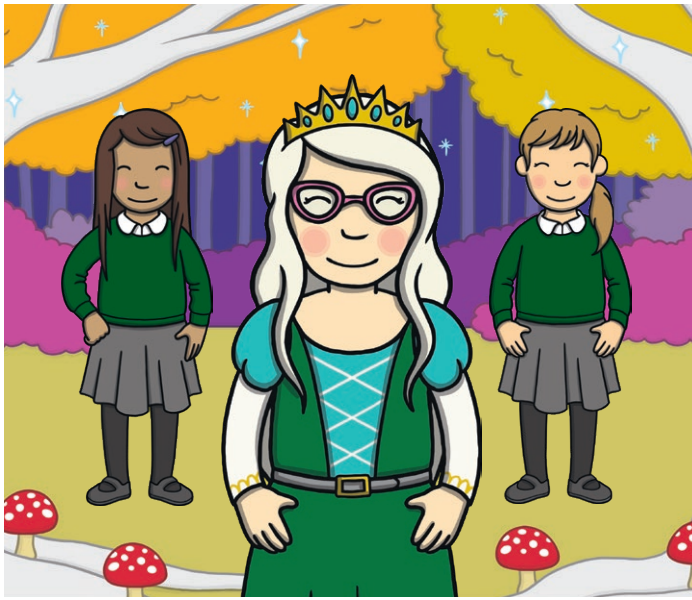


Q3: Who did Sam, Gabi and Lily meet in the Enchanted Forest?

---

Q4: Where did the troll live?

---



Lily's Challenge

---

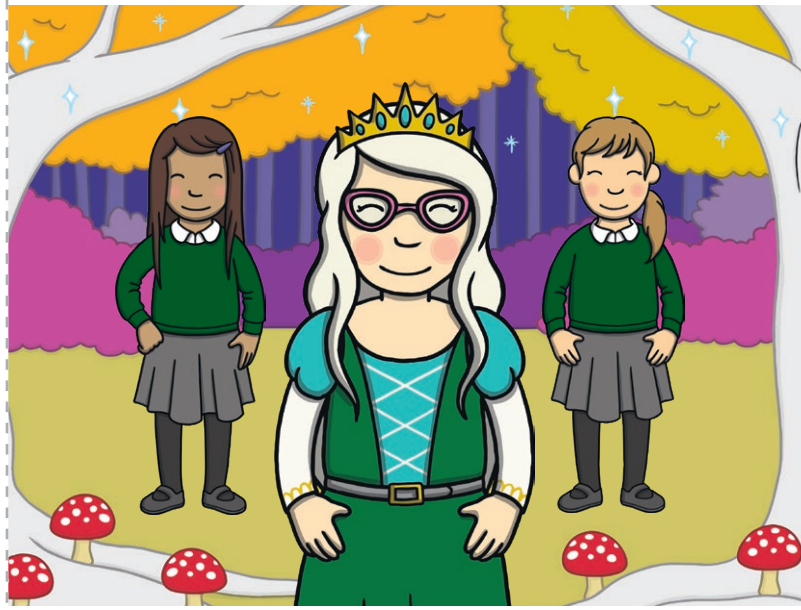


---



---

# Lily's Challenge



A 'Let's Write Together!' Book



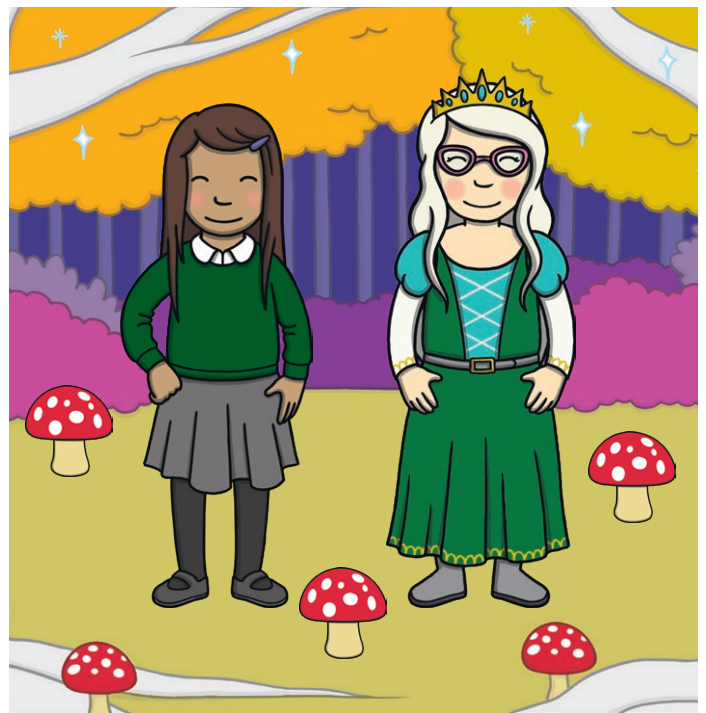

---



---



---




---



---



---




---



---



---




---



---



---



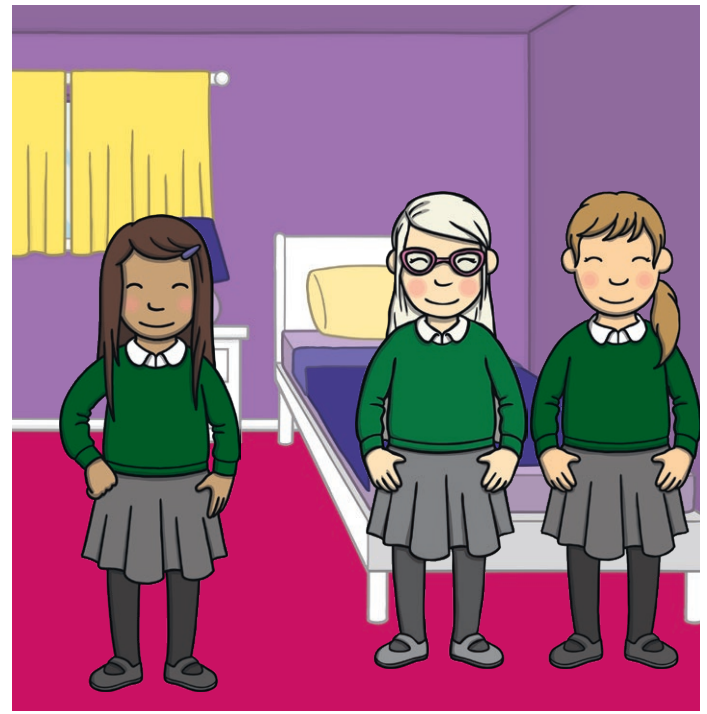

---



---



---




---



---



---